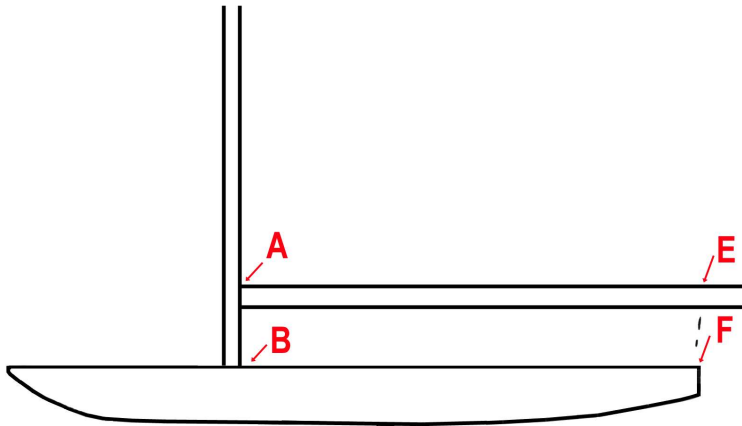




# The Sailors' Tailor, Inc.®

Established in 1972 Manufacturing Boat Covers Rowland Sails Duffle Bags School Bags Sewn Accessories  
 Website [www.sailorstailor.com](http://www.sailorstailor.com) Tel: (937) 862-7781 FAX: (937) 862-7701  
 LOFT: 1480 W. Spring Valley-Paintersville Rd. Spring Valley, Ohio 45370



## C SCOW Skirted Mooring Cover

In order to assure best fit, please supply these measurements & FAX or email back. Thanks!

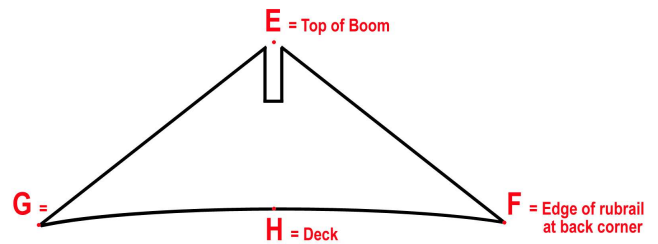
MFR. of boat \_\_\_\_\_

Year of boat \_\_\_\_\_

Your Name \_\_\_\_\_

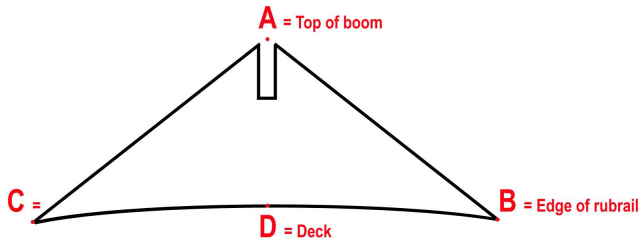
Tel. # \_\_\_\_\_

Back corner straight forward to side stay. \_\_\_\_\_  
 Side stay to edge of boat \_\_\_\_\_  
 Prefer Port or Starboard zipper? \_\_\_\_\_



Measuring at the BACK END OF BOAT...  
 (NOT from the end of the boom):

E to F \_\_\_\_\_  
 E to G \_\_\_\_\_  
 E to H \_\_\_\_\_



Measuring from the FRONT END OF BOOM:

A to B \_\_\_\_\_ Top of boom straight outward to middle of rub rail.  
 A to C \_\_\_\_\_ Top of boom straight outward to middle of rub rail.  
 A to D \_\_\_\_\_ Top of boom straight down to deck.

Locate BACKSTAY CUT in cover:

Run tape measure perpendicular from top of boom straight out to rubrail so it touches the backstay.

X = Top of boom to backstay touch point \_\_\_\_\_

Y = Backstay touch point to edge of rubrail \_\_\_\_\_

Z = Backstay touch point to back corner of boat \_\_\_\_\_

